



Established 1925

KANSAS GEOLOGICAL SOCIETY

# BULLETIN

Volume 87 Number 6

November—December 2012

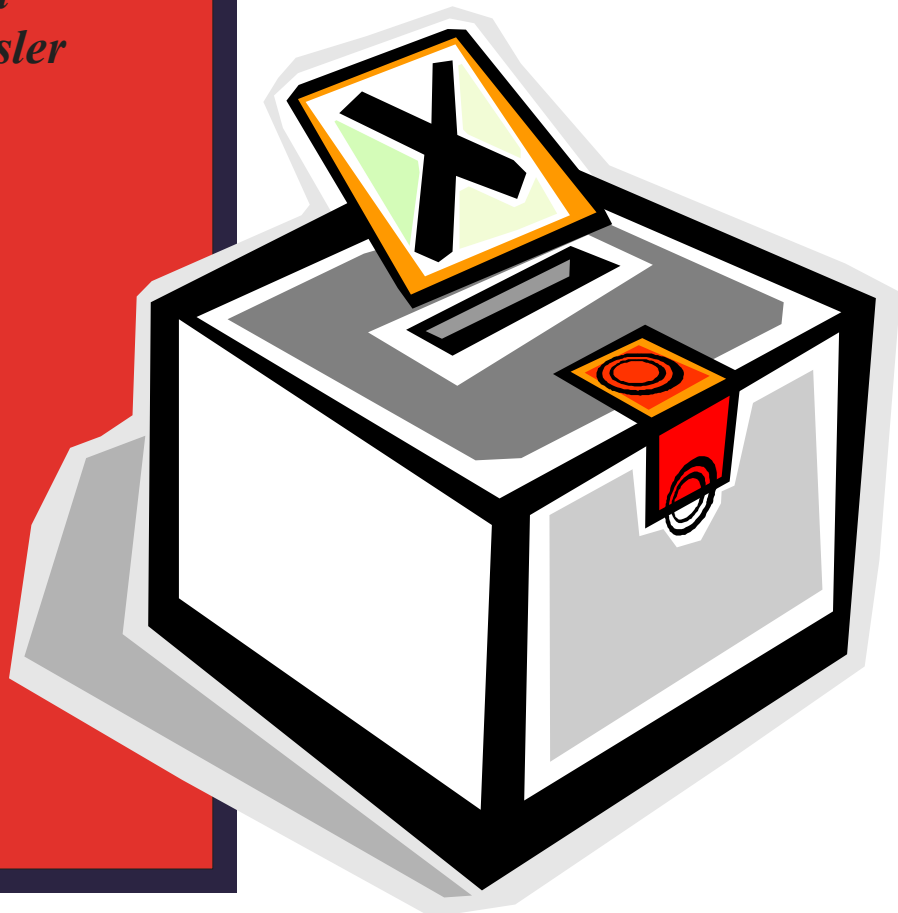
## **IN THIS ISSUE**

*Honorary Member Profile:*  
*Dr. W. Lynn Watney*

*Profile:*  
*Philip M. Knighton*

*Memorials:*  
*Robert Gutru*  
*Francis Whisler*

**Election Edition**  
**See the slate of candidates**  
**Page 16 — 18**



# TGS WELL DATA DELIVERS THE WORLD



With over **6,000,000** well logs available, TGS provides high quality data from the most popular hydrocarbon plays around the globe.

TGS has expanded its well data library to include production data, directional surveys, mud log data and formation tops. Each format can be conveniently accessed online, through the online well data portal LOG-LINE Plus!®.



Learn more at [WWW.TGS.COM](http://WWW.TGS.COM)

# Table of Contents

---

## Features

Profile.....	10
Meet The Candidates .....	16
Honorary Profile .....	19
Memorials.....	20

## Departments & Columns:

KGS Tech Talks .....	4
President's Letter .....	7
Advertiser's Directory .....	8
From the Manager.....	9
KGS Board Minutes .....	14
Professional Directory .....	23 & 24
Exploration Highlights .....	26

### ON THE COVER:

**Watch for your ballot in the mail and get it back to us by December 1st.  
Thank you to all candidates for running for office!**

---

### CALL FOR PAPERS

The Kansas Geological Society Bulletin, which is published bimonthly both in hard-copy and electronic format, seeks short papers dealing with any aspect of Kansas geology, including petroleum geology, studies of producing oil or gas fields, and outcrop or conceptual studies. Maximum printed length of papers is 5 pages as they appear in the Bulletin, including text, references, figures and/or tables, and figure/table captions. Inquiries regarding manuscripts should be sent to Rebecca Radford, [manager@kgslibrary.com](mailto:manager@kgslibrary.com) or mailed to 212 N. Market, Ste. 100, Wichita, KS 67202. Specific guidelines for manuscript submission appear in each issue of the Bulletin, which can also be accessed on-line at the Kansas Geological Society web site at <http://www.kgslibrary.com>

# SOCIETY Technical Meetings

Nov. 6—Neil Suneson— *“Arkoma Basin Hydrocarbon Exploration and Development—Past, Present, and Future”*

Nov. 20—Michael Pollok— *“My Odyssey Through The Mississippian Subcrops”*

Nov. 27—Charlie Smith, *“Comparison of Magnetic Resonance Permeability to Lab Permeability”*

Dec. 4—Greg Riepl, *“Cherokee Paleolithologies, Long Branch Field, Payne County, OK”*

Dec. 18—Dr. Lynn Watney, *“Preparations for small scale field testes at Wellington Field: CO2-EOR in Mississippian and carbon sequestration in the Arbuckle Group”*

Jan. 15—TBA

Jan. 22—Dr. Lee Krystinik, AAPG President

Jan. 29—Dr. Tony Walton’s KU Petroleum Class

## *Location for Technical Meetings*

*All KGS technical presentations are held at 12:30 p.m. at the **Wichita Bar Association**, located at **225 N. Market**, ground floor conference room, unless otherwise noted.*

*Note: For those geologists who need 30 points to renew their licenses, there will be a sign-in sheet*



## BOARD OF DIRECTORS

---

<b>PRESIDENT</b> Kent Scribner	<b>PRESIDENT-ELECT</b> Dave Clothier
<b>SECRETARY</b> Robert Bayer	<b>TREASURER</b> Rocky Milford
<b>DIRECTORS</b> Douglas V. Davis Ryan Dixon Tim Hellman	<b>ADVISORS</b> Kent Crisler Dave Goldak

## COMMITTEE CHAIRMEN

---

<u>Advertising</u>	Kent Scribner
<u>Advisory</u>	Kent Crisler Dave Goldak
<u>Annual Banquet</u>	Bob Bayer
<u>Budget Committee</u>	Rocky Milford
<u>Bulletin</u>	Rebecca Radford
<u>Continuing Education</u>	Robert Cowdery
<u>Distinguished Awards</u>	Douglas V. Davis
<u>Environmental</u>	Kent Matson
<u>Field Trip</u>	Larry Skelton
<u>Fishing Tournament</u>	Randy Teter
<u>Future Plans</u>	Ernie Morrison
<u>Golf</u>	David Barker
<u>Historian</u>	Larry Skelton
<u>Investment</u>	Rocky Milford
<u>Library</u>	Roger Martin Ted Jochems
<u>Membership</u>	Larry Friend
<u>Nomenclature</u>	John H. Morrison, III
<u>Picnic</u>	Marjorie Noel
<u>Public Relations</u>	Robert Cowdery
<u>Shooting Tournament</u>	Larry Richardson
<u>Technical Program</u>	Robert Cowdery
<u>Ticket Sales</u>	Bill Shepherd
Walters Digital	Marjorie Noel

## A.A.P.G. DELEGATES

---

Robert Cowdery 2012	Douglas Davis 2012
------------------------	-----------------------

## BULLETIN STAFF

---

<b>EDITOR</b> Rebecca Radford—Interim	(316) 264-2985
<b>ADVERTISING</b> Kent Scribner Stelbar Oil Corp.	(316) 264-8378
<b>PROFILES/MEMORIALS</b> Robert D. Cowdery Consultant	(316) 267-9030
<b>EXPLORATION HIGHLIGHTS</b> John H. Morrison, III Independent O&G	(316) 263-8281

<b>STATE SURVEY</b> Rex Buchanan KS Geological Survey	(785) 864-3965
---	----------------

<b>SOCIETY NEWS</b> KGS Library	(316) 265-8676
------------------------------------	----------------

<b>EDITOR EMERITUS</b> Wes Hansen	(316) 863-7313
--------------------------------------	----------------

## K.G.S. LIBRARY

---

**PHONE** 316-265-8676 **FAX** 316-265-1013  
email: [frontdesk@kgslibrary.com](mailto:frontdesk@kgslibrary.com) or  
Web: [www.kgslibrary.com](http://www.kgslibrary.com)

**LIBRARY MANAGER**  
Rebecca Radford 265-8676  
[manager@kgslibrary.com](mailto:manager@kgslibrary.com)

The KGS *Bulletin* is published bi-monthly by the Kansas Geological Society, with offices at 212 North Market, Wichita, Kansas 67202 Copyright 2010, The Kansas Geological Society. The purpose of the *Bulletin* is to keep members informed of the activities of the Society and to encourage the exchange and dissemination of technical information related to the Geological profession. Subscription to the *Bulletin* is by membership in the Kansas Geological Society. Limited permission is hereby given by the KGS to photocopy any material appearing in the KGS *BULLETIN* for the non-commercial purpose of scientific or educational advancement. The KGS, a scientific society, neither adopts nor supports positions of advocacy, we provide this and other forums for the presentation of diverse opinions and positions. Opinions presented in these publications do not reflect official positions of the Society.

**TRILOBITE  
TESTING INC**

Eleven Trucks Serving  
Kansas - Colorado - Texas  
Nebraska - Illinois

Slickline services using the same  
Alpine Electronic Pressure  
Guages as used on DST's

Back pressure testing (G1 & G2)  
DST's

**1-800-728-5369**

**FAX: 1-785-625-5620**  
**trilobite @eaglecom.net**

SHOPS LOCATED IN:

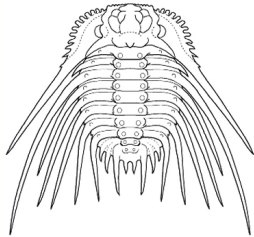
Hays, KS

Scott City, KS

Pratt, KS

Hugoton, KS

Clay City, IL



## ***CAN YOU NAME THE CRITTER?***

**Sponsored by Trilobite Testing, Inc.**

Is your paleo up to date?

If you know the name of the trilobite,  
submit your guess via e-mail to  
manager@kgslibrary.com

Remember that *Trilobite Testing* is  
sponsoring your efforts, so be sure to thank  
Paul Simpson the next time you see him.

**Frank Mize correctly identified the critter.**  
Read more—learn more

"While it is an arthropod, technically *Kleptothule  
rasmusseni* is NOT a Trilobite. It is "trilobite like."

See: [http://www.peripatus.gen.nz/taxa/arthropoda/  
trilobita/TriOri.html](http://www.peripatus.gen.nz/taxa/arthropoda/trilobita/TriOri.html)

**Bulletin committee members and PhD's in  
Paleontology are prohibited from entering.**



**Bring in your old maps,  
we have scanned several  
and they look great!**

**Our pricing Special:**

**Solid color @ \$4.00/sq. ft.**

**Line maps w/color @ \$3.00/sq. ft.**

**We've upgraded!!!**

**We now have a 44" Context Scanner**

**AND**

**A 44" Cannon Plotter**



# President's Letter

Dear Members,

On October 12, I attended the KGS Annual Shooting Tournament. Our son, Wade, was home on leave from his assignment in Greenland with the Air Force and was able to attend the shooting tournament, also. Wade and I were running a bit late the day of the tournament and barely arrived in time to enjoy Pat Kane's great food before the shooting began. The weather was cool and the rain held off until a little over halfway through the event. When it did rain, however, it poured! We all took shelter at the clubhouse for a few minutes until the storm passed. When our scores were tallied up, we discovered that Wade had out-scored everyone on our team with the new shotgun that we had bought him as an early Christmas present.

I believe the awards and door prizes were better than ever this year. All participants went home with at least one great item. It was quite obvious that everyone had an excellent time!

My thanks to Kent, Rick and all the others for organizing and working at the Annual Shooting Tournament. I also extend my thanks to all those who contributed money and prizes for the event. I was not able to participate in the KGS Annual Fishing Tournament this year, but heard that it was lots of fun, as always. Thank you to Randy and everyone else who contributed time and resources to the tournament.

I have truly enjoyed serving as President of our society this year and look forward to seeing all of you at our Annual Banquet on January 11, 2013. I know everyone will want to be present, especially for the celebration recognizing W. Lynn Watney as our newest KGS Honorary Member. Congratulations from all of us, Lynn!!!

Respectfully,  
Kent Scribner





KANSAS STATE UNIVERSITY

**GEOLOGY**  
DEPARTMENT

**GRADUATE EDUCATION**  
**for active professionals**

<i>Through:</i>	<i>Leading to:</i>
Workshops	Academic credits
Field Trips	Certificates (pending)
Distance Education	M.S. degree

*With specializations in:*  
 Petroleum Geology  
 Groundwater  
 Exploration Geophysics  
 Environmental Geochemistry

*Information:*  
 KSU Continuing Education: [www.dce.ksu.edu](http://www.dce.ksu.edu)  
 KSU Geology Department: [www.ksu.edu/geology](http://www.ksu.edu/geology)  
 KSU Graduate School: [www.ksu.edu/grad](http://www.ksu.edu/grad)  
 or e-mail George Clark, interim dept. head: <[grc@ksu.edu](mailto:grc@ksu.edu)>

**ADVERTISER'S DIRECTORY**

	<i>page</i>
Allied Cementing Company, Inc	27
American Energies Corp. Nitrogen Rejection	12
Duke Drilling	27
GeoCare Services AAPG	13
Kansas Geological Foundation	26
Kansas State University	8
Lockhart Geophysical	27
Lone Star Geophysical Surveys	15
MJ Systems	25
MBC Well logging	27
Murfin Drilling Company, Inc	27
Neuralog	21
PARAGON Geophysical Services, Inc	13
PetroBase	11
Pratt Well Service	21
Professional Directory	23-24
Sterling Seismic Services	11
Sunrise Oilfield Supply	27
TGS-NOPEC Geophysical Company	2
Tomcat Drilling	27
TRES Management	12
Trilobite Testing	6
Walters Digital Library	8 & 21
Weatherford	31
Well Enhancement Services	12

**ADVERTISER'S RATES: 2012**

Full Page	B&W	Color
6 issues	\$2,000	\$2,500
3 issues	\$1,080	\$1,325
1 issue	\$480	\$525
<b>1/2 Page</b>		
6 issues	\$1,000	\$1,500
3 issues	\$540	\$825
1 issue	\$225	\$350
<b>1/4 Page</b>		
6 issues	\$600	\$900
3 issues	\$325	\$525
1 issue	\$150	\$250
<b>1/8 Page</b>		
6 issues	\$300	\$500
3 issues	\$175	\$325
1 issue	\$75	\$185
<b>Professional Ad (Business Card)</b>		
6 issues	\$90	\$180

*For one-time ads, call Rebecca at 316-265-8676*

Log in to  
**Walters Digital Library**  
 At  
[www.kgslibrary.com](http://www.kgslibrary.com)  
  
 Log in as our guest  
 and see the Society's Database  
 A convenient way to see what  
 you might want to order!  
 Call or email your order to:  
 316-265-8676  
[frontdesk@kgslibrary.com](mailto:frontdesk@kgslibrary.com)



# From The Manager

Dear Members,

I can't believe we are winding down another year! Seems to be going too fast sometimes. We remain very busy here in the library. We thank all of you geologists that are sending us your geo reports to print. Be sure to ask for a PDF copy for sending into the KCC, we gladly provide that service too.

With fall comes election time. We have a great slate of candidates for you to choose from again this year. Thank you to all who have accepted the run for office. You can view their bios starting on page 16. Watch the mail for your ballot. **Ballots will be due by December 1st.**

The **Annual Banquet** will be a little earlier this year. We have it scheduled for Friday, January 11, 2013. We will be inducting W. Lynn Watney as an Honorary Member. Please come and join us in celebrating Lynn and all of our past Honorary Members.

The Annual Business Meeting will be held on Tuesday, Dec. 18th, following the Technical Talk.

Thank you to all the people and companies who supported the KGS Fishing Tournament and the KGS Shooting Tournament this year and thank you to the committees who put them on. We had some rain that day but everyone seemed to have a good time anyway. Some of you shooters might consider coming to our fishing tournament next year. We didn't have as many participants but those who went fishing had just as good a time as you all who went shooting.

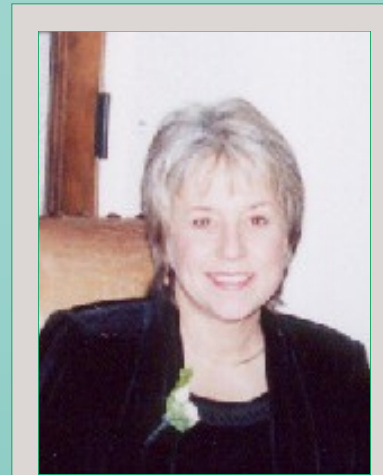
Thank you for another great year, your support of the Society and Library has helped us to grow into a stronger position, able to offer the membership more services and better access to data. I would also like to personally thank Kent Scribner for his time as President and thank I the entire board for their support and guidance.

Here's hoping you all have a blessed holiday season!

Respectfully submitted,

*Rebecca Radford*

Manager



Let Us Print Your Geo Reports  
And Save Your Time For Finding More Oil & Gas

Top Quality Color Printing For Our Membership

Email your files to: [tammy@kgslibrary.com](mailto:tammy@kgslibrary.com)

Philip M. Knighton was born August 25, 1942 in Tulsa, Oklahoma. His father, Earl M. Knighton, a former KGS member was a geologist, petroleum landman and oil operator. His grandfather was a mining engineer in the Tri-state mining district, a lead-zinc area in south-east Kansas, Northeast Oklahoma and Missouri. His great grandfather was involved with William F. Cody in copper mining in Arizona when the Indians kept killing the drivers of the wagons going to the nearest railhead to steal the horses so that he and Cody gave up and sold the mine, now one of the largest in the world near Bisbee, AZ. "So, I have rocks in my blood..." Phil says. "Even my Boy Scout Master, KGS member Bob Gutru was a geologist. My backpack came home heavier than when I left as Bob always pointed out the good fossil picking sites along the way." He is married to member Chris Dilts Knighton. He has three children by a prior marriage and seven grandchildren.



Phil graduated from the University of Wichita in 1964 with a BA in Geology. He taught in his senior year geology labs on a fellowship and continued there getting a Masters in 1967. In the summer of 1964 he sat wells for Northern Natural Gas Company in Iowa on gas storage projects. Detailed descriptions and structural analysis of that area became his thesis topic. A short semester at KU working on a PhD caused him to take a job with Humble Oil & Refining (later EXXON) because he was just burned out of going to school. Stationed in Lafayette, LA, he tells of his greatest discovery. He was out in the Cote Blanc (shallow water) on a rig running logs for a Pecan Island field well, called in to see if it would be OK to take advantage of the Schlumberger Engineer's offer to shoot up the 20 remaining cores for the cost of the explosive charges, about \$1.25 each. Phil was in the SPWLA (Society of Professional Well Log Analysts) and the group was assembling saltwater data across the area. It was OK with his boss so he selected a number of sure-fire wet zones up hole to get good saltwater data in. As was typical, one finishes about 3:00 AM and catches the 5:00 AM crew boat in to the landing. Then one drives through fog so thick you can't see past the hood ornament on the car literally and drive watching the white line on the center of the road out the side window. You drop off the cores at CoreLab and head home to shower and try and make the 8:30 morning meeting. When he arrived at the meeting it was breaking up, but the big boss was there and glad-handed Phil, praising him and patting him on the back for his success. Phil waited until the rest of the geologist left and his immediate boss, Reg Hastings, gave him that rye smile and said, "Bet you wonder what this is all about?" "Yep" was his answer. "Well you just found 80 feet of condensate in those upper zones that calculate wetter than heck on the logs. We didn't know they were there...but they are there. Congratulations!"

Lafayette was fun, but the oil business was slowing down, as Phil noted only two of the 100 geologist in his division had wells going, so Phil took leave of EXXON and went to Topeka, KS to teach geology at Washburn and take a law degree. He said he thought he'd really be "hot" on the job market for an oil company legal staff or law firm that does oil and gas work. While at Washburn Phil was selected to manage the first Legal Clinic of senior law students who helped low income people afford to get legal advice and representation. On graduating, instead of being hot stuff, he found the law firms were afraid he'd run off and play geology when the oil business was hot and they'd waste their five to seven years teaching him how to really be a lawyer (law school notwithstanding). The oil companies were in a depression and not hiring. Those few who would interview him advised that 'law' was steadier than the ups and downs in the oil business. He hung his own shingle and hoped that someday oil and gas work would come his way, taking anything that walked in the door, DUI's, divorces, court appointments, etc. After several years of this, an opportunity to manage the Federal Land Bank's 2,000,000 acres of mineral holdings in Colorado, Kansas, Oklahoma, and New Mexico became available. This gave Phil experience in coal, oil and gas, uranium, gold, copper, silver, sand, gravel, and building stone...just about any kind of mineral deposit. It was a great 4.5 years. A particular President ascended at the Land Bank and thought geologist were "slickers" (along with all oil people) and lawyers were the lowest form of all living things. Needless to say, Phil left the Land Bank after taking that operation from \$200,000 net per year to \$2,000,000. The new President felt he was overpaid. Phil noted he left there and started sitting wells and tripled his income...the oil business was indeed waking up. He promoted some drilling deals as MINEX, Inc. with Lonnie Lollar, PE., developing some production near St. John, Kansas. At this time he officed with Al Stude and Karl Becker. These two were mentors and helped get him established. "Al broke me out on the western Kansas rock column and Kansas style of well sitting", Phil noted. Al also referred me to Imperial Oil Company to do the NGPA pricing applications, maps and exhibits. Then came F.G. "Sandy" Holl as a client. Each of these clients drilled 50 wells a year and I sat a few wells for them, but mostly did their regulatory filings and KCC work, using both the geology and law. At the KCC, Bob Frensley used to joke whether Phil would appear to testify with a rock hammer or wear a coif (wig) and be a lawyer asking the questions of other geologist and engineers. During many dockets he did both for different clients and different matters.

We all know this came to a grinding halt in 1985. Kansas went down from 250 active drilling rigs to 4. Consultants work was proportionately reduced. Phil is married to Chris Dilts, also a member and geologist from an oil family: her father Bob Dilts, past KGS President, brother Jim Dilts, consultant...all were out of work. Phil & Chris started making dinosaur track reproductions from copies of tracks Chris' uncle had collected of Allosaur tracks. Phil said, "The Allosaur tracks sold in local garden stores as

*Experience, Integrity, Innovation...*

# STERLING

SEISMIC SERVICES, LTD.

[www.sterlingseismic.com](http://www.sterlingseismic.com)

**Renegade Seismic Studio Refraction Statics  
Z-White Spectral Enhancement  
Tsunami Pre-Stack Time Migration**

Projects from one square mile "Postage Stamp" 3Ds to the 1,100 square mile nine 3D merge through PSTM we completed in 2006, no project is too small or too big. All projects are given the same attention to detail that we have become known for.

**Structural or stratigraphic, we've got the experience  
to provide you with a superior dataset.**



**303-347-9011**

## Are you getting the full picture with your oil field data?



- Put the pieces together with simple to use data management from PetroBase.
- Our software allows you to make more informed decisions that save you time and money.
- Easily track your data regarding
  - Production
  - Barrel Tests
  - Well History
  - Expenses
  - Economics
  - Fluid Levels
  - Problem well identification and more

**PetroBase**  
Oilfield Management Software

To learn more call 316.755.6850  
or visit [petrobase.net](http://petrobase.net)



## WOULD YOU LIKE TO INCREASE YOUR PRODUCTION AT A FRACTION OF THE COST OF HORIZONTAL DRILLING?



**Well Enhancement Services, LLC** is jetting laterals utilizing new technology and coiled tubing. We now have the ability to place hundreds of gallons of acid hundreds of feet away from the well bore. This allows us to not only enhance existing production but to produce reserves previously unreachable. It has established itself by repeatedly increasing production in both new and existing wells. Contact us for more information, questions or to schedule your next well with **WES**.



*“Tap into success.....with WES”*

### Please Contact Us:

Phone: (785) 625-5155

Fax: (785) 625-4151

Field: (785) 259-4638

wesofhays@hotmail.com  
Box 87, Schoenchen, KS 67667



MANAGEMENT INC.

7011 North Robinson  
Oklahoma City, OK 73116

405-842-7888 Phone • 405-842-7885 Fax

www.tresmanagement.com  
Email: tres@tresmanagement.com

Providing engineering, planning, and site supervision services for all phases of the oil & gas operations:  
Drilling, completion, workover, and facilities

Current activity includes providing engineering and supervision on horizontal projects in the Mid-Continent, Rocky Mountain, and Gulf Coast regions.

# WANTED



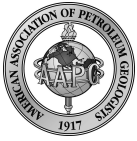
## LOW BTU GAS to Buy or Treat

www.NitrogenRejectionUnit.com



American Energies Corporation

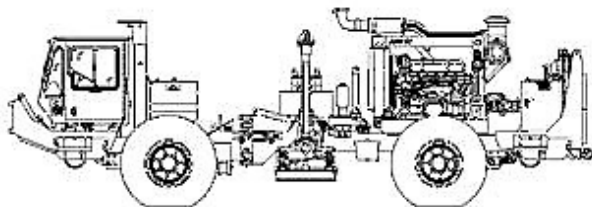
316-263-5785



Security for AAPG Members  
& Their Families  
Through Group Insurance

*Life*  
*Health*  
*Dental*  
*Disability*  
*Auto and Homeowner*  
*Supplemental Plans*

AAPG's  
GeoCare Benefits Insurance Program  
P. O. Box 9159  
Phoenix, AZ 85068-9159  
**800-337-3140**  
**E-mail: [geocarebenefits@agia.com](mailto:geocarebenefits@agia.com)**  
**[www.geocarebenefits.com](http://www.geocarebenefits.com)**



~The TOP CHOICE for 3D SEISMIC~

John H Beury III ~ Pres John Aguilar ~ Op. Mgr.

**PHONE (316) 636 - 5552 FAX (316) 636 - 5572**

3500 N. Rock Rd., Bldg 800, Suite B  
Wichita, KS 67226

[paragon@parangongeo.com](mailto:paragon@parangongeo.com)

Knighton profile cont.

stepping stones. We then copied some smaller raptor tracks that were plate sized and could hang on a kid's wall at home. We sold these to rock shops and museums all over, but they wouldn't reorder. One can't make any money if you have to travel and deliver Profile continued from pg. 10—Knighton

small orders. It was fun and we met a lot of great people, but it was a break even deal. I just wasn't interested in going back to the court appointments, DUI's and divorces practice". He says he 'hunkered down' and repaired antique speedometers from 1900 through 1931, developing it into a business that deals internationally. "Sometimes if you want to stay in the oil business you should not give up your day job. We all know that one...", "Phil says. "I'm probably the largest antique speedometer dealer and repair service in the world, see [antiquespeedometer.com](http://antiquespeedometer.com). It kept beans on the table until things got better."

"Although the oil business was dormant, one client was drilling, American Warrior, in Garden City. This gave me a new lease on life for regulatory work," Phil noted. "Chris and I finally got our big break promoting some drilling in Stanton County. We were looking for another Interstate or Stockholm Field. Instead of production on that one (we did find 80 feet of clean channel sand full of salt water) we connected with a group of solid investors who liked our type of geological deal and thinking. We had a who's who of investors. Plus I'll always remember the encouragement received from member Bob Walters, Rod Sweetman, Todd Allam, Lloyd Parrish and member Fred James. VAL Energy took three deals and one hit in a nice southern Barber County area, designated the Kochia Field and one we call 'Medicine River West' although it is not officially designated that. We have finally achieved a secure retirement and some modest production, which is strange for a 70 year old guy to feel like he is just getting started. We have about 30 more areas we'd like to drill," Phil said. Knowing him and Chris, don't bet against it.

Phil has served on the KGS Board and is a Past President of the KGS, Past President of the Wichita Chapter of the Society of Independent Professional Earth Scientist. He is presently on the Kansas Geological Foundation Board. He has presented talks and authored articles published by this Society and wrote a chapter on KCC Regulatory matters in the Kansas Bar Association's Oil and Gas Handbook. His hobbies are music, antique autos, and enjoying his wife, children and grandkids. He has sung in past Wichita Bar Association shows and at local clubs doing vocals of a popular and show tune nature. He has amongst a few other antique cars, a Wichita Built 1919 Jones Six automobile. He jokes that his first car was a 1928 Model A Ford, that he paid \$10 for, from L. C. Stubbs (oil man who was the father of member Pete Stubbs), which was just a used car and was not an antique at the time. He has published restoration articles in a number of antique car magazines. The favorite family event is a whole wheat waffle breakfast he fixes with walnuts, fruit and real maple syrup. It is always the most requested from the grandkids.



---

# Kansas Geological Society Board Minutes

---

The monthly meeting of the Board of Directors of the Kansas Geological Society was held on **September 19, 2012**, at the Wichita Petroleum Club.

**A. Treasurer's Report**- Mrs. Radford presented us with the Treasurer's report for August 2012. Mrs. Radford reported that the CD's earned \$649.00 interest. Additionally, some funds were moved from WDL account to KGS checking account. The next CD to mature will be December 17, 2012 at Rose Hill State Bank.

**B. Manager's Report**- Mrs. Radford presented the Manager's Report for August 2012. Monthly income was \$127,448.73 and expenses were \$70,761.78, making the profit \$56,686.95 for the month (reflects \$50,000.00 transferred from WDL to KGS). The reports shows, 271 Library members and 241 Walters Digital Library members.

## OLD BUSINESS

- A. October Bus Trip** – Scheduled 50 seats available.
- B. Mid-Continent Section Meeting** – October 5-7, Amarillo, Texas (Palo Duro Canyon) Ernie Morrison and Doug Davis will attend.
- C. Approval of Membership for John Goldsmith** – discussed voted and passed.

## NEW BUSINESS

- A. Neuralog Software** – Will have a demonstration at the Library. If well received funds have been allocated to purchase.
- B. Mapping Software** – Investigation to determine if Geographix or Petra can be purchased and available for mapping at the Library is in its infancy.
- C. New Membership Directory** – 200 print copies will be made, and it is available digitally from the Society website.
- D. Eastern Kansas Files** – Rebecca has been tasked with determining requirements ( money, employees and equipment) to initiate and complete getting these in the digital library.

Respectfully submitted by Robert P. Bayer, II, Secretary

The monthly meeting of the Board of Directors of the Kansas Geological Society was held on **October 9, 2012** at the Wichita Petroleum Club. **CALL TO ORDER**- Mr. Scribner called the meeting to order at 11:40 a.m.

**A. Treasurer's Report**- Mr. Milford presented us with the Treasurer's report for September 2012. Mr. Milford reported that the current CD's earned \$654.00 interest. The next CD to mature will be December 17, 2012 at Rose Hill State Bank, and will be renewed for an additional year.

**B. Manager's Report**- Mrs. Radford presented the Manager's Report for September 2012. Monthly income was \$76,749.61 and expenses were \$66,345.30, making the profit \$10,404.31 for the month. The reports shows, 760 total members, 283 Library members and 241 Walters Digital Library members.

## OLD BUSINESS

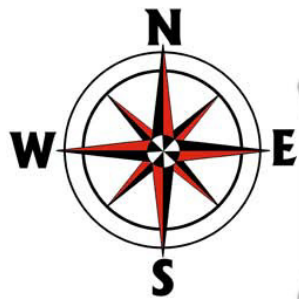
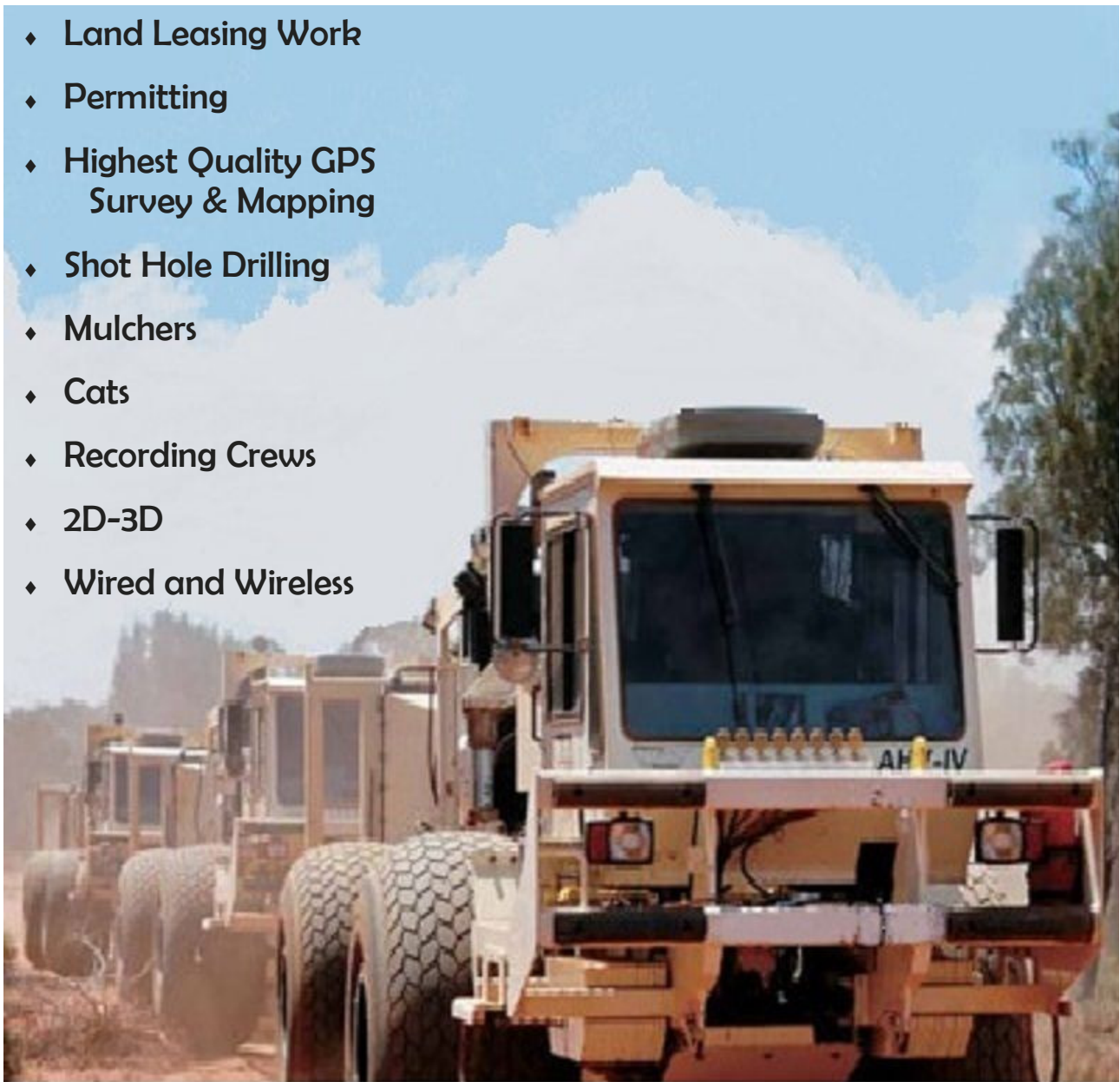
- October Bus Trip** – Scheduled 50 seats available.
- Neuralog Software** – Mr. Bryan Mills will present a demonstration at the Library of the capabilities on October 10<sup>th</sup>. If well received, funds have been allocated to purchase
- Eastern Kansas Files** - Scanning of Eastern Kansas records, the process of determining necessary equipment and manpower to accomplish the task has been initiated.
- Mapping Software** – Investigation to determine if Geographix or Petra can be purchased and available for mapping at the Library is in its infancy.
- New Membership Directory** – 300 print copies were made, and it is available digitally from the Society website.

## NEW BUSINESS

- 2013 Annual Budget** – review of previous operating yearly budgets, including salaries and prices will be reviewed. The committee (Milford, Hellman and Bayer) will meet and present the proposed 2013 operations budget. This will include salary adjustments and pricing adjustments if determined to be necessary.
- Upcoming Holiday Hours of Operation** – The Library will be closed Monday December 24 and Tuesday December 25, 2012 for Christmas and Monday December 31, 2012 and Tuesday January 1, 2013 for New Years.
- Annual Banquet** – The Annual Banquet will be Friday January 11, 2013 at the Petroleum Club, Wichita, Kansas.

Respectfully submitted by Robert P. Bayer, II, Secretary

- ◆ Land Leasing Work
- ◆ Permitting
- ◆ Highest Quality GPS Survey & Mapping
- ◆ Shot Hole Drilling
- ◆ Mulchers
- ◆ Cats
- ◆ Recording Crews
- ◆ 2D-3D
- ◆ Wired and Wireless



# LSGS

## LONE STAR GEOPHYSICAL SURVEYS

TOLL FREE - 855-238-8521  
OFFICE - 405-726-8626  
FAX - 405-285-8521

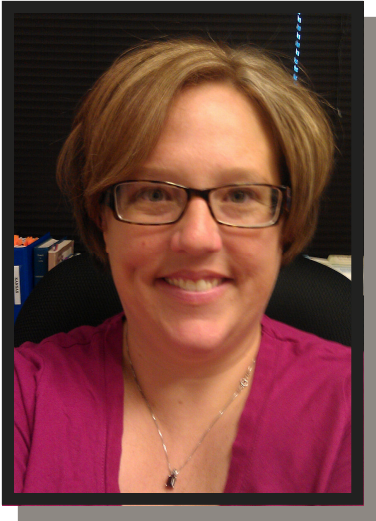
HEATH HARRIS  
PRESIDENT

[WWW.LSTARGEO.COM](http://WWW.LSTARGEO.COM)

[HHARRIS@LSTARGEO.COM](mailto:HHARRIS@LSTARGEO.COM)

# Meet The Candidates

## Vice President 2013 - President 2014



**Marjorie Noel**



**Brian Fisher**

**Education:**

B.S., Geology, Wichita State University, 2002  
M.S., Earth, Environmental and Physical Sciences,  
Wichita State University, 2007

**Professional Experience:**

Geologist- Woolsey Operating Co., 2007-present  
Lecturer- Dept. of Geology, WSU, 2008-2011  
Geotech- Woolsey Operating Co., 2002-2007  
Library Assistant, Kansas Geological Society & Library,  
2002-2004  
Geotech- Palomino Petroleum, 2001-2002

**Professional Affiliations:**

Kansas Geological Society, 2001-current  
AAPG, 2000-current

**KGS Board and Committees:**

Treasurer- 2011  
Secretary- 2010  
Walters Digital Library- Chairperson- 2011-current  
WDL Committee- 2009-current  
Fall Picnic- Chairperson- 2008-2012  
Picnic Committee- 2004-2012  
Annual Banquet- Chairperson- 2003

**Other Committees and/or Boards:**

WSU Geo Advisory Board, Vice-President- 2008-2010  
Board Member- 2007-2008

**Education:**

BS Geology, 1974, Fredonia State University of New York  
Graduate geology hours: Akron State University of Ohio, Oklahoma  
State University, Wichita State University, Graduate of Kansas Public  
Health Leadership Institute 2004-2005

**Professional Experience:**

Staff Geologist – Falcon Exploration Inc., Wichita, 2007 to present  
Ground Water Geologist – City of Wichita, 1991 – 2007  
Research Analyst - Kansas Corporation Commission , 1990  
Consulting Geologist – 1988 - 1990  
Staff Geologist, Woods Petroleum, 1986 - 1988  
Exploration Manager, Texas Energies, Inc. 1983 - 1986  
Well site geologist, Field Engineer, Developmental Geologist- Resource  
Exploration of Canton, Ohio 1975- 1978

**Professional Affiliations:**

Kansas Geological Society, 1979 to present, AAPG, 1977 to present,  
Certified Petroleum Geologist, Kansas Professional Geologist.

**KGS Board and Committees:**

Secretary 2001, Treasurer 2002, Picnic Committee, Future Plans Com-  
mittee, Computer Committee, Recipient of Kansas Geological Award for  
Education 1999 and 2007.

**Publications and Presentations:**

Contributing Author in: “Assessment of The Impact of Storm water Re-  
charge from Unlined Earthen Pits on Ground-Water Quality in the Wich-  
ita Area, Kansas Geological Survey Open-File Report 93-47, December  
1993, Contributing author in section – Spotlights on Scientists in chil-  
dren’s book; “Skill Building for Science, grades 5-6, Carson-Dellosa  
Publishing Company, Inc.” by Jennifer Linrud Sinsel, 2006.



# Meet The Candidates

## Secretary 2013—Treasurer 2014



**Ryan Dixon**



**Paul Ramondetta**

**Education:**

B.S. Geology, Wichita State University, 2007

**Professional Experience:**

Geologist, Dixon Energy Inc., 2007-Present  
Geotechnician—2004-2007

**Professional Affiliations:**

Kansas Geological Society  
AAPG  
SEPM  
GSA

**KGS Board and Committees:**

KGS Board—Director 2011-2012  
Bob Slamal Memorial Type Log Committee  
Future Plans Committee

**Education:**

B.S. Geology, Brooklyn College, 1971  
Masters Geology, Brooklyn College, 1975  
Post graduate classes at University of Houston, Rice University,  
and University of Texas at Austin, 1975-1981.

**Professional Experience:**

Geology Lab Instructor, Brooklyn College, 1972-1974  
Seismic Processor, Western Geophysical in Houston, 1974-1976  
Geology and Physics Instructor, Houston Community College,  
1976-1979  
Consulting Geologist in Houston, 1976-1979  
Research Geologist, Bureau of Economic Geology in Austin, 1979-  
1981  
Petroleum Geologist & Supervisor, Cities Service/Oxy, Wichita,  
OK City, Bakersfield, Tulsa, Doha; 1981-1998  
Exploration & Exploitation Manager, Vess Oil Corp, Wichita, 1998  
to present (2012).

**Published Articles & Talks:**

Environmental Geology, 1978  
Houston Geological Society, 1979  
Bureau of Economic Geology, various works, 1980-82  
Oil & Gas Journal, 1990  
Kansas Geological Society, various talks and publications, 1983-  
2012

**Professional Affiliations:**

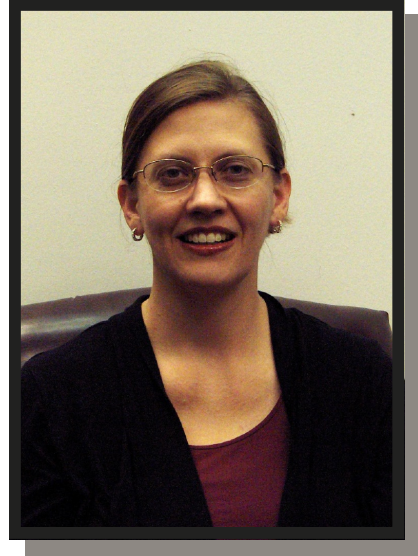
AAPG, current  
Kansas Geological Society, current  
Many past affiliations.

# Meet The Candidates

## Director At Large 2013—2014



**Frank Mize**



**Monica Williams**

**Education:** BS Geology, Kansas State University 1976

**Professional Experience:** Exploitation Geologist/Marathon Oil Company; District Geologist/Petroleum, Inc; Exploration Manager/Bankoff Oil Company; President, FaB Environmental, Inc.

**Professional Affiliations:** 36 year member KGS, 35 year member AAPG; Past Vice President/President, Kansas Well Logging Society/local chapter of the SPWLA; Licensed Geologist/KS #365

**KGS Board and Committees:** Former Director/KGS; served as Picnic chairman, & multiple years as golf tournament chairman.

**Short Bio:** Frank divides his consulting time these days between the gas storage industry (Class 1 Non-Haz wells, salt cavern wells & Class 5 wells), and the tried and true oil & gas industry. He specializes in many computer applications such as: salt cavern modeling, subsurface mapping, well course design & presentation graphics. Frank also spends a great deal of time well watching, generating a full color digital geologic reports w/sample photos. He also generates and evaluates prospects.

**Education:** Master of Science in Earth, Environment, and Physical Sciences, Wichita State University

Bachelor of Science in Geology, Minor in Anthropology  
Wichita State University

**Professional Experience:**  
Vanguard Petroleum LLC, Geologist  
Abercrombie Energy, Staff Geologist/Geological Technician  
Wichita State University, Teaching Assistant/ Supplemental Instructor/ Research Assistant  
Kansas Geological Survey, General Support Assistant  
Chesapeake Operating Company, Geological Technician

**Professional Affiliations:**  
Kansas Geological Society  
Kansas Geological Foundation  
American Association of Petroleum Geologists  
SEPM (Society for Sedimentary Geology)

---

## Honorary Profile — *W. Lynn Watney*

---

The geologist being honored this year by the Kansas Geological Society is one of the most difficult to write his history as he has done so much to advance the geology of Kansas and the profession in general. A short article such as this will not begin to cover all his accomplishments.

Lynn's story commences in Mason City, Iowa in 1948, and continues in Northwood, Iowa where he attended grade school and high school. In the meantime he had developed an interest in rocks, land forms etc. which was to determine his college major and later solidify his choice of profession.

He first attended North Iowa Area Community College in Mason City, Iowa in 1968. Lynn graduated "With Distinction" as a Geology Major in 1970 from Iowa State University. While there he was honored with membership in Phi Kappa Phi, an honorary scholastic fraternity. In the summer of 1970, worked as a Petroleum Geologist for Gulf Oil Corporation in Jackson, Mississippi. He worked for Chevron Oil in the summer of 1971 in Lafayette, LA. In 1972, Lynn received a Master's Degree from Iowa State. From 1970 until 1972 he worked as a Teaching Assistant and Instructor at Iowa State.



In 1970 he found time to marry his wife, Karen from Northwood and they have a daughter, Chris who resides in Denver.

After receiving his Master's, Lynn was employed by Chevron as a Development and Exploration Geologist at their New Orleans office. During this period he was the wellsite geologist on tests in North Carolina, Florida, Arkansas, Kentucky, Alabama, and Louisiana. In 1976 he departed from Chevron and joined the Kansas Geological Survey in Lawrence. There he has held a wide variety of positions commencing with Research Associate from 1976 to 1981, Chief of Subsurface Geology Section 1981-83, Chief Geologic Investigations 1983-87, Chief Petroleum Research Section 1987-90. From 1991 until 2007, he was Executive Director, The University of Kansas Energy Research Center. He has also served as Courtesy Professor of Geology at the University of Kansas and Kansas State University. Currently Lynn is Senior Scientific Fellow with the Kansas Geological Survey.

During this period with the KGS he has been the author or co-author of 52 articles and studies that have received contracts and research grants. He has been involved with 83 published articles. He has abstracts published on hundreds of articles and has made numerous presentations that haven't any published abstracts.

His many presentations and studies have taken him all over the globe to such areas as China, Bangladesh, South America and East Germany.

Honors that he has received are too numerous to mention all but some of the more prominent ones are: Erasmus Haworth Graduate honors in Geology, KU, Secretary- Treasurer, SEPM, Distinguished Achievement Citation from Iowa State, Jules Braunstein Memorial Award for Best Poster Presentation (AAPG) with others in 2001 and 2003, and of course, President of the Kansas Geological Society in 2010. He has held many positions with the SEPM and AAPG including membership in the House of Delegates, 1997-2000. He has served the Mid-Continent Section of the AAPG on several occasions and will once again as Technical Program Chair of the Mid-Continent meeting to be held in Wichita in 2013.

Besides his professional contributions to society, Lynn has another activity of note, he has served Good Shepherd Lutheran Church as President of the Board.

This has been an extremely abbreviated version of all that Lynn has accomplished. It is impossible to envision anyone more deserving of this honor than Dr. Lynn Watney.

---

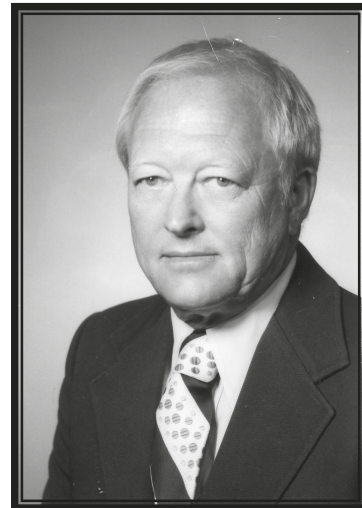
# Memorials

---

## *Robert Gutru*

Robert Gutru, 96, retired geologist, died Saturday, October 6, 2012. Graveside Service were held at 10:30 a.m. Friday, October 12, 2012, at Andover Cemetery with a reception following at Crestview Country Club.

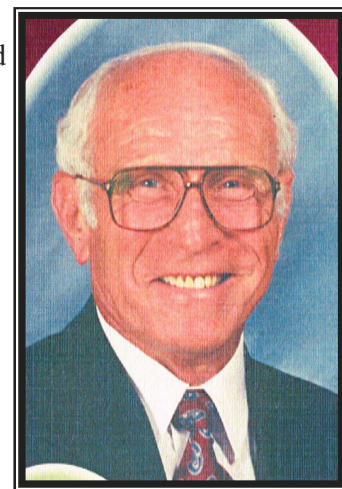
Robert graduated from the University of Nebraska. Later in his life, the university awarded Robert the Distinguished Service Award for dedicated service to the university's alumnae. Then, during WWII, Robert served as a Lieutenant in the Navy. In his career, Robert received numerous awards and honors from the Kansas Geological Society and served as its President in 1962. He also was a member of the Board of Directors of the Society of Independent Professional Earth Scientists from 1973-1976, and served on the Board of Directors of the American Association of Petroleum Geologists. Outside of his career, Robert was a 32nd Degree Mason for over 50 years and served the Boy Scouts of America as a leader, advisor and supporter for over 60 years.



Preceded in death by: wife of 54 years, Betty; brothers, Clarke and George. Survived by: current wife, Rachel Feek of Leavenworth, WA; daughter, Sandy (Jim) Reilly; grandson, Patrick (Ange) Reilly and their children, Dylan, Jason, Taryn, and Loren; grandson, Michael (Jaclyn) Reilly and their children, Caitlin and Cameron. A memorial has been established with Boy Scouts of America, Quivira Council, 1555 E 2nd St. N., Wichita, KS 67214. Downing & Lahey Mortuary East. Tributes may be sent to the family via [www.dlwichita.com](http://www.dlwichita.com)

## *Francis Whisler*

Francis Clark Whisler, 84, was born May 1, 1928 in south Trego County, Kansas. He passed away August 2, 2012 at Wheatland Nursing Center in Russell. The family lived on the farm until 1934 when they moved to Wakeeney, Kansas. Francis had two sisters and one brother. Francis attended Community High School where he graduated in May of 1946. He then enlisted in the United States Navy and was trained as a photographer. He spent his time in the Navy from June 1946 through May 1948, serving as photographer for the fleet Camera Party of the Pacific Fleet in Hawaii, Guam, Japan, and China and received his honorary discharge in San Francisco, California. In the fall of 1948 he enrolled at Kansas State University and began his study of petroleum geology. After graduation in June, 1952, he worked one year for an oil field acidizing company in Plainville, Kansas where he got acquainted with geologists with Jones, Shelbourne, and Farmer of Russell, Kansas. In 1960 he started his own consulting geologic business and worked for some of the smallest oil producers as well as some of the largest major oil companies in Kansas and Nebraska. He continued working as an independent geologist until his death. His career spanned 60 years.



In May of 1954 he married Patricia Brockett of Lincoln, KS, whom he had met as a student at Kansas State. To this union was born two children, Michael and Susan. Francis is survived by his wife Patricia, son Michael of Russell and daughter Susan Albers of Overland Park, Kansas. Francis was a member of Trinity United Methodist Church and a life member of the Veterans of Foreign Wars, as well as a member of the American Association of Petroleum Geologists, the Kansas Geological Society, and Kansas State University Alumni Association.

Funeral services were held at Trinity United Methodist Church in Russell, Kansas on August 7, 2012. A memorial has been established with Trinity United Methodist Church.

**Neuralog**  
Turning Paper Into Petroleum

**Bryan Mills**  
Regional Sales Manager

**Solutions for Today's Geoscientists**

- Scan, Print & Digitize - Logs & Maps
- Geological Interpretation
- Master E&P Data Management

1.281.240.2525  
bmills@neuralog.com · www.neuralog.com



**PRATT WELL SERVICE INC.**  
Complete Well Service

Since 1946

P.O. Box 847  
Pratt, Kansas 67124

Equipment yard & field office:  
1 3/4 miles North on Highway K-61 from 54 & K-61 Junction

Kenneth C. Gates  
President  
Kevin C. Gates  
Vice President

1-800-660-7974  
Fax: 620-672-5902

Member KIOGA /AESG

Call us 24  
Hours-A-Day  
620-672-2531

- Experienced Crews
  - Rod & Tubing Service
  - Workover & Completions
  - Swab Tanks
  - Pole Masts-Single and Double Derricks
  - Air Foam Unit
  - Monitor & Water Well Drilling
  - Reverse Circulating Pump & Power Swivel Equipment
  - Statewide Oilfield Hauling
  - Environmental Cleanup
  - Vacuum Trucks/Water Trucks
  - Dirtwork-Dozers, Grader, Backhoe
- Hydrovac Excavation Service**
- Cleaning cattle guards
  - Mud tank cleaning
  - Potholing
  - Trenching
  - Pipeline Crossings



www.prattwell.com



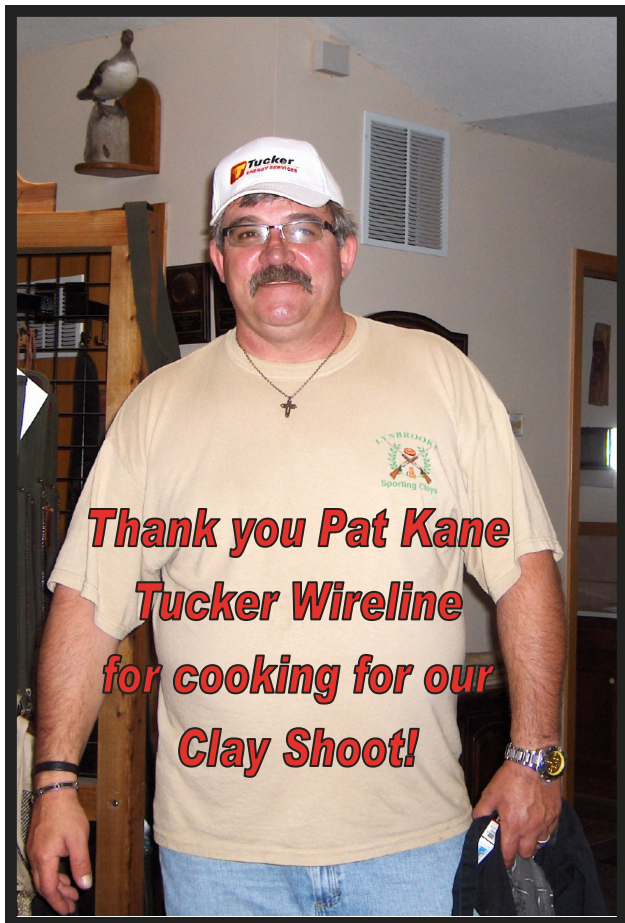
# Robert F. Walters Digital Library

The most complete source for Kansas Data

www.kgslibrary.com

316-265-8676

The screenshot displays the Robert F. Walters Digital Geological Library website. At the top, there are navigation tabs: Search Wells, My Transactions, My Profile, My Account, KGS Home, and FAQ. Below these are search filters for Section, API Number, County, Operator, Lease Name, Depth, Doc. Type, Well No., Spot, and Spud from/to. A table of search results is shown with columns for API No., County, Sec, Twp, Rge, Operator, Lease Name, Well No., Spot, Location, NS, E/W, Spud, Completion, Depth, EI KB, EI DF, EI GL, and Status. A preview window shows a well log for well 2047, including completion card, tops, and log data. The log data includes Tensid from 4880' to 4910', Hydrostatic Mud Pressure, Flow Pressure, Bottom Hole Pressure, Tool Open time, and Check Surface. The log is recorded by Messers, Daniels & Bowman.



## Kansas Geological Foundation Video / DVD Collection

The KGF has an extensive collection of videos available for check-out at no charge.  
Only pay for shipping back.

These are ideal for classroom or general public viewing.

See the web for titles & descriptions  
[www.kgfoundation.org](http://www.kgfoundation.org)

Call 316-265-8676  
Ask for Janice to check out videos

# New KGS Directory



If you are a member of the Kansas Geological Society, call 316-265-8676 and we will give you the password to access the Membership Directory

If you are a member of the Walters Digital Library, you will be able to access the Directory once you have logged on.

Printed copies are available upon request.

# PROFESSIONAL DIRECTORY

**Kirk Rundle**  
*Consulting Geophysicist*  
 3D Seismic Design, Acquisition to Processing QC,  
 Interpretation and Analysis, Subsurface Integration  
 7340 W. 21st. N., Ste. 100  
 Wichita, Kansas 67205

Office: 316-721-1421 Fax: 316-721-1843  
 Email: kirk@rundlegeo.com

**ROGER L. MARTIN**  
*Independent Petroleum Geologist*  
 200 E 1st St, Ste 405, Wichita, KS 67202

Office 316-833-2722 Cell: 316-250-6970  
 KS Field Cell: 316-655-1227  
 Fax: 316-425-3829  
 Email: rogermartingeo@yahoo.com



**GeoCertified, LLC**  
*Professional Geological Services*  
 Hydrocarbon Detectors and Geologist Onsite 24/7

Phone: (913) 441-2311 • Cell: (913) 544-7527  
 www.geocertified.com

**ALFRED JAMES III**  
*Petroleum Geologist*  
 Kansas - Colorado - Utah

200 W. Douglas, Ste. 525, Wichita, Kansas 67202

SIPES # 1111  
 Office (316) 267-7592  
 alfred.james55@yahoo.com

Tel.: (972) 712-9036  
 Fax: (972) 712-0258  
 Cell: (214) 223-1784

**LANG J. FUQUA**  
 Certified Petroleum Geologist

4201 Tanglewood Ln.  
 Frisco, Texas 75035

**M. Bradford Rine**  
*Honorary Life Member—Kansas Geological Society*

*Licensed Geologist—KS, #204*  
*Registered Professional Geologist—Wyo. # 189*  
*Certified Geologist—A.A.P.G. # 2647*  
*S.I.P.E.S. # 1584 S.P.E. #109833-4*

PROSPECT EVALUATION • PROSPECT GENERATION  
 WELLSITE SUPERVISION • EXPERT TESTIMONY • OPERATIONS  
 PROPERTY EVALUATION • RESERVOIR STUDIES  
 DRLG./COMP. CONSULTATION


Suite 415 Office: (316) 262-5418  
 100 S. Main Fax: (316) 264-1328  
 Wichita, KS 67202 Cell: (316) 250-5941

**WESLEY D. HANSEN**  
*Consulting Geologist*  
 Well site Supervision  
 Geologic Studies  
 212 N. Market, Ste 257  
 Wichita, Kansas 67202  
 Off: (316) 263-7313  
 Mobile: (316) 772-6188



Paul Gunzelman  
 President/Geologist

Wichita, Kansas 316.634.6026  
 email p.gun@sbcglobal.net



**KEVIN L. KESSLER**  
 INDEPENDENT/CONSULTING PETROLEUM GEOLOGIST

WELLSITE SUPERVISION • GEOLOGIC RESEARCH  
 OIL & GAS PROSPECTS  
 KANSAS & EASTERN COLORADO

MAILING ADDRESS PHONE  
 1199 N. PONDEROSA RD. RES.: (316) 522-7338  
 BELLE PLAINE, KS 67013 MOBILE: (316) 706-6636  
 EMAIL: KKESSLER1199@AOL.COM

**MELLAND ENGINEERING, INC.**  
*Petroleum Engineering & Geological Consulting*

**James E. Melland, P.E., P.G.**  
 President  
 Office: (620) 241-4621 Fax: (620) 241-2621

jamesm@mellandengineering.com  
 www.mellandengineering.com

P.O. Box 841, McPherson, KS 67460

**KGJ ENTERPRISES**

Contract Oil & Gas Accounting &  
 Office Management

Kathryn G. James, MBA (316) 775-0954  
 4278 SW 100th ST. (316) 250-5989  
 Augusta, KS 67010 kgjames@onemain.com

**Your AD would look really  
 good here!!**

## PROFESSIONAL DIRECTORY

### *Blue Ribbon Drilling, LLC*

PO Box 279, Dewey, OK 74029

Phone and Fax: 918-534-2322

John's Cell Phone: 918-440-9639

Larry's Cell Phone: 918-440-9638

Jeff's Cell Phone: 918-440-9647

Email: [johnroutree@bratco-operating.com](mailto:johnroutree@bratco-operating.com)



### **Geotech & Design Services**

7171 Highway 6 North, #202

Houston, Texas 77095

Data digitizing, drafting & computer graphics

Tel: (281) 858-7100

Fax: (281) 500-8534

[heather.wilson@geotechmap.net](mailto:heather.wilson@geotechmap.net)

**Heather Wilson**  
Account Manager

[www.geotechmap.net](http://www.geotechmap.net)

## KOGER

Satellite Data Processing and Analysis  
Oil & Gas Exploration

Consulting  
Expert Witness  
Training & Seminars  
[www.davekoger.com](http://www.davekoger.com)

David G. Koger  
3152 Waits • Ft. Worth, TX  
USA 76109-2330  
817-921-6825 (RITS)  
[DKoger@aol.com](mailto:DKoger@aol.com)

*Tuesday  
Dec. 18, 2012*

*KGS Annual  
Business Meeting  
Following the  
Tech Talk*

## We Invite You To join

### *Kansas Geological Foundation*

*\$50.00 membership is  
tax deductible*

*Call 316-265-8676*

*Or send checks to:  
Kansas Geological Foundation  
212 N. Market, Ste. 100  
Wichita, KS 67202*

### The Following Are For Sale

The following data collections are available for sale:

#### *Kansas Completion Cards:*

- 1 set in cabinets from an established Wichita exploration company.
- 1 set in boxes from an established Wichita explorationist (West Ranges only).

#### *Oklahoma Completion Cards:*

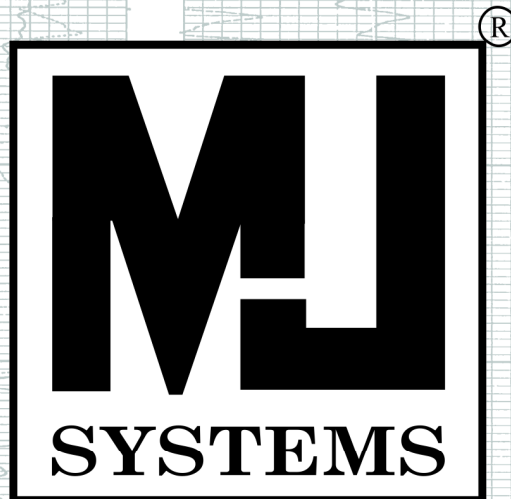
- 2 sets in boxes from established Wichita exploration companies.
- Also, Oklahoma and Texas logs on microfiche.

**Call: 316-265-8676**



THE KGS thanks the following for supporting  
the 2012 Shooting Clays Tournament

Allied Cementing Co., Inc.  
Andy's Mud & Chemical  
Basic Energy Services, LP  
Beredco Drilling  
Buckeye Supply  
Central Kansas Surveying & Mapping  
Coffeyville Resources  
COVEY, The Well Watchers  
Diamond Testing  
Dixon Energy, Inc.  
Duke Drilling  
Eagle Creek Corporation  
Echo Geophysical  
Edwards Consulting  
Egging Roustabout Service  
Empire Energy  
Grand Mesa Operating Co.  
Gressel Oilfield Service, Inc.  
Halliburton  
Hedke-Saenger Geoscience  
Hesse Petroleum Co, Inc.  
The Independent  
Lockhart Geophysical  
Log Tech, Inc. of Kansas  
Lotus Exploration Co, Inc.  
Roger L. Martin  
Maverick Drilling  
MBC Well Logging & Leasing  
McDonald Tank  
McLeod Exploration  
Ernie & Pat Morrison  
Mud-Co/Service Mud, Inc.  
Mull Drilling Co., Inc.  
Murfin Drilling Co., Inc.  
Nalco Chemical  
National Oilwell  
NCRA  
Stan Nelson  
Paragon LLC  
Pioneer Energy Services  
Pratt Well Service  
Raymond Oil Company  
Larry Richardson  
Don Shawver  
Sunrise Oilfield Supply  
Superior Testing  
Superior Well Service  
Sweetman Investments, LLC  
Theis Dozer Service  
Tidelands Geophysical  
Trilobite Testing, LLC  
Thoroughbred Associates  
Tucker Wireline  
Val Energy, Inc.



*Logs Since 1971*

[www.mjlogs.com](http://www.mjlogs.com)

**6 MILLION LOGS**

**DEPTH REGISTERED**

**INTERNET  
DOWNLOADS**

**ONLINE  
SEARCH**

**SEARCH AND FILTER BY DEPTH**

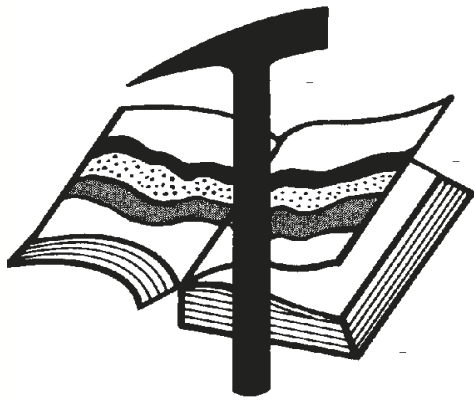
**OWN THE LOGS**

**LogSleuth Software**

**CLUB WEB**

**WEB SITE CATALOGUE**

**1-800-310-6451**



# Kansas Geological Foundation

Web Site: [www.kgfoundation.org](http://www.kgfoundation.org)

**212 North Market  
Wichita, Kansas 67202**

A not-for-profit educational and scientific corporation

## **GOALS:**

- promote geology and earth science
- preserve geological records
- establish memorials and endowments
- support field trips and seminars
- financial aid and grants to students

**PLEASE HELP SUPPORT THE FOUNDATION**

## **Kansas Geological Foundation Services**

The Kansas Geological Foundation provides the following services as a part of the organization's commitment to educate the public regarding earth science.

### **Speaker's Bureau**

A list of speakers available to talk about various aspects of geology may be obtained by contacting Janice Bright at the KGS Library, 265-8676. This service is free to the public.

### **DVD/Videotape Library**

The KGF maintains a DVD & videotape library focused primarily on the various fields of earth science. These tapes may be checked out without charge by the public. To obtain a list of tapes, please contact the KGS Library, 212 N. Market, Ste. 100, Wichita, KS 67202, or call Janice Bright at 265-8676.

The Kansas Geological Foundation was founded in March, 1989 as a not-for-profit corporation under the guidelines of section 501(c)(3) of the tax code to provide individuals and corporations the opportunity to further the science of geology. It is dedicated to providing charitable, scientific, literary and educational opportunities in the field of geology for the professional geologist as well as the general public.

KGF can receive in-kind donations through which the donor may receive a tax deduction. Of equal importance, the KGF provides the financial resources to sort, process and file this data at the KGS library. If you have a donation to make, please contact the KGF at 265-8676.

Your tax-deductible membership donation helps to defray the cost of processing donations and to support public education programs about the science of geology. Annual membership begins at \$50.00 per year. Donations of \$100.00 or more are encouraged through the following clubs:

<b>Century Club</b>	\$ 100 to \$ 499
<b>\$500 Club</b>	\$ 500 to \$ 999
<b>Millennium Club</b>	\$1000 to \$5000
<b>President's Club</b>	\$5000 and over

WESTERN KANSAS  
SOUTHERN NEBRASKA



EASTERN COLORADO  
OKLAHOMA & TEXAS PANHANDLES

**10 Drilling Rigs**

**10 Well Service Rigs & Roustabout Services**

For contract information, please contact:  
Blaine Miller / Drilling Department  
316-858-8607 (Direct) or 316-267-3241

For contract information, please contact:  
Alan Hays, Well Service Sprvsr.  
785-421-2103 or 785-567-8739 (cell)

250 N. Water #300—Wichita, KS 67202

East Highway 24—Hill City, KS 67642

**DUKE**

**DRILLING COMPANY**

**ROTARY DRILLING CONTRACTOR**

620 Hubbard PO Box 823  
Great Bend, KS 67530  
Phone 620-793-8366

100 S. Main, Ste. 410,  
Wichita, KS 67202  
Phone 316-267-1331  
Fax 316-267-5180

**Tomcat Drilling**

3 Rotary Rigs - Rotary Drilling Contractor  
Southwest Kansas • Oklahoma & Texas Panhandles

Tim Sanders 316-262-8554 phone  
316-259-1652 Cell  
tjsanders@tomcat.kscoxmail.com

100 S. Main, Suite 508  
Wichita, KS 67202

Great Bend (620) 793-5861      Ness City (785) 798-3843      Medicine Lodge (620) 886-5926

**ALLIED CEMENTING CO., INC.**

Acidizing Available at Medicine Lodge District

Russell (785) 483-2627      Oakley (785) 672-3452

**Lockhart Geophysical Company**

Call (303) 592-5220 FAX (303) 592-5225  
Or E-mail lockden@xpert.net

2D & 3D Seismic Acquisition  
Vibroseis Specialists

**JAPEX GDAPS-4** Distributed System

*We'll give you seismic excellence*

**MBC**

WELL LOGGING & LEASING  
UNMANNED GAS DETECTORS  
MUD LOGGING  
CERTIFIED INSTRUMENT TECH  
SERVING THE KAN-O-TEC AREA SINCE 1990

AUSTIN GARNER      MARLA GARNER  
24-HOUR PHONE (620) 873-2953  
MEADE, KANSAS

**SUNRISE OILFIELD SUPPLY**

FULL LINE SUPPLY STORE  
With Pump Shop, New & Used  
Pipe, Equipment and Fittings  
Exclusive S-55 casing source

STORES:

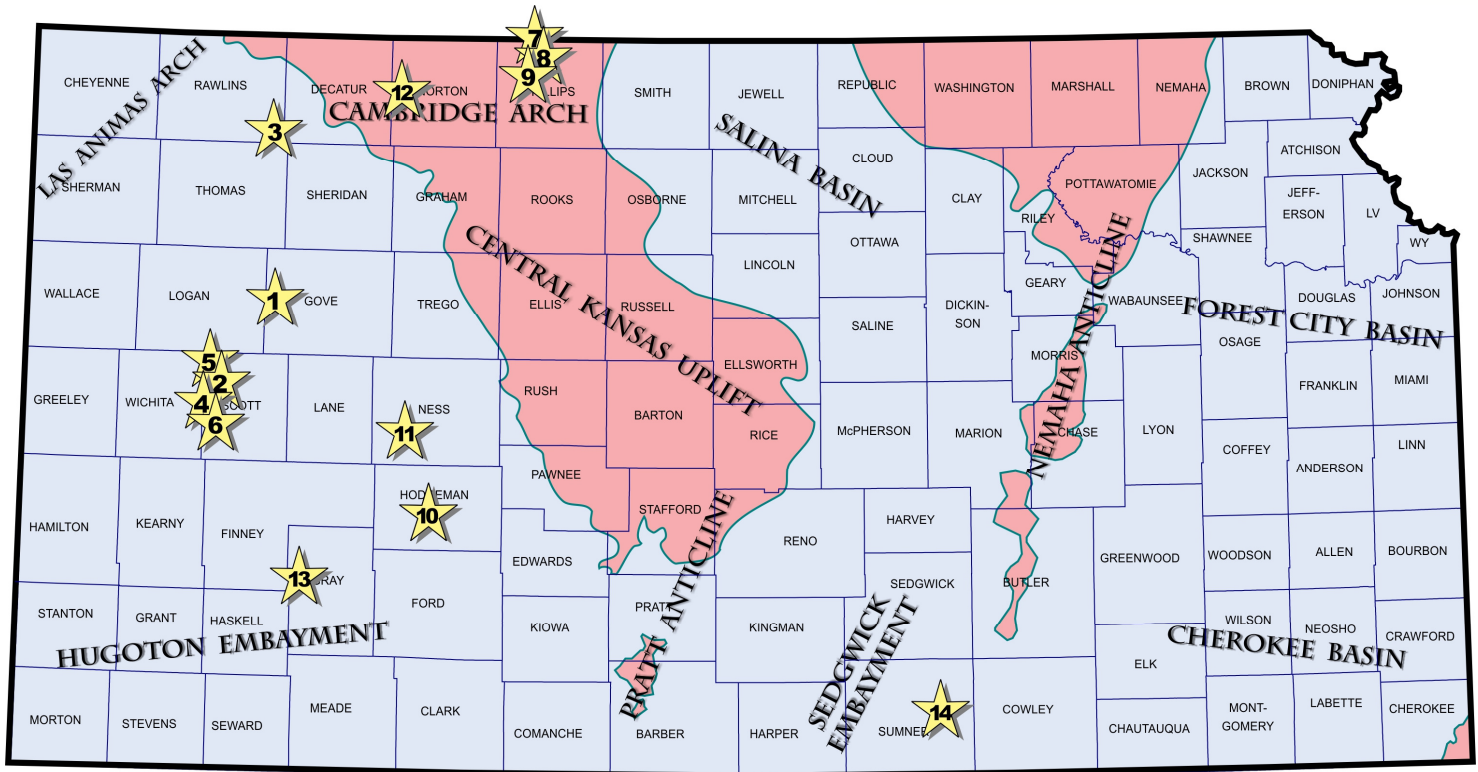
Chanute, KS	620-431-6500
El Dorado, KS	316-321-9323
Garden City, KS	877-976-1700
Hays, KS	785-650-0199
Hugoton, KS	620-428-6604
Ness City, KS	800-589-5733
Spivey, KS	620-532-5261
McCook, NE	308-345-1542

SALES OFFICES:

Wichita, KS	800-777-7672
Great Bend, KS	316-792-3130
Cell:	316-786-4255
Denver, CO	303-319-6753
Williston, ND	701-570-9255

# Exploration Highlights

By John H. Morrison, III  
Independent Oil & Gas



(1) **Grand Mesa Operating Company**, Wichita (KS), reports the discovery of new Cherokee oil deposits at their 1-14 S & L, SE SE SE in section 14- T13s- R31W, western **Gove** County, about three and one-half mile south and twelve miles west of Gove, Kansas. Murfin Drilling Company rotary tools bottomed the well at a total depth of 4698 ft. Oil was discovered in the Johnson Zone within the Cherokee Group. Closest existing production lies over a mile to the north in the multipay Antelope Ridge East oil field. No completion details are available. The new field is named Swift Fox.

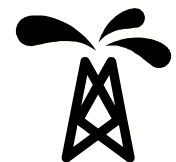
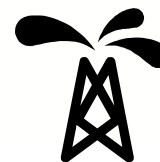
(2) **Landmark Resources, Inc.**, Houston (TX), has successfully completed its 1-2 Beeson as a Cherokee (Johnson Zone) oil producer at a remote wildcat site in western **Scott** County. The new Capstone pool opener discovered reserves over two miles southeast of the Pence oil field where both the Marmaton and Cherokee formations have produced crude since late 2010. The Beeson well was drilled in the NW SE NW of section 2- T17s- R34W to a rotary total depth of 4900 ft. No completion details have been released. Well site is located eight miles north and 2 miles east of Modoc, Kansas.

(3) **Murfin Drilling Company, Inc.**, Wichita (KS), has established a new unnamed oil field in **Rawlins** County in northwestern Kansas. The firm's 1-1 Zola Unit, spotted in the NW SE NE of section 1- T5s- R31W, is producing an undisclosed amount of oil from the Lansing-Kansas City limestones. Company rotary tools drilled the well to a total depth of 4490 ft. The new Elna Northeast field is situated four miles south and four miles east of the town of Achilles, Kansas.

(4) **New Gulf Operating LLC**, Tulsa (OK), has a new Marmaton oil discovery nearly two miles southwest of the Isbel West (Marmaton) oil field in **Scott** County. The 1 A. C. Felt, located in the SW SW NE of section 6- T18s- R34W, is producing crude from the Pawnee limestone member. No completion details are available. The Beaver Lodge South pool opener was drilled to a total depth of 5082 ft by VAL Energy rig. Field area lies about two and one-half miles northwest of Modoc, Kansas.

(5) **Shakespeare Oil Company, Inc.**, Salem (IL), is producing Marmaton Fort Scott oil at their 1-25 Carson, located in the NE SW NW of section 25- T16s- R34W, **Scott** County. Operator found new oil source nearly one and one-half miles east of the established Pence (Marmaton, Cherokee) oil field. The new Pence East field is situated ten miles north and three miles east of Modoc, Kansas. No completion details have been released. Rotary total depth was obtained at 4882 ft.

(6) **Comanche Resources Company**, Oklahoma City (OK), has successfully completed its 30-1 Savolt as a Marmaton (Pawnee) oil well to establish the Lehman North oil field in **Scott** County. The wildcat well found new reserves nearly one mile north of existing Marmaton oil wells in the Lehman field. Discovery site is located in the SE SE NE of section 30- T19s- R34W or about eight miles south and one mile west of Modoc, Kansas. Total depth is 5015 ft.



**Bach Oil Production, Inc.**, Alma (NE), has successfully completed three more wildcat wells in **Phillips** County in north central Kansas. All three producers have discovered oil deposits in the Lansing-Kansas City limestones within a six-mile square in T1s - R19W and all are situated from one and one-half to five miles southwest of the town of Woodruff, Kansas. No completion details have been released.

(7) First, the **1 Rodenbaugh** is on pump in the SE NW SW of section 10- T1s- R19W. The well was bottomed at a total depth of 3625 ft using Murfin Drilling Company tools. The well lies almost two miles west of recently established LKC oil production in the Woodruff field which Bach Oil Production also discovered earlier this year. The Rodenbaugh discovery has been given the field name of Woodruff West.

(8) About one mile northwest of the K-V (LKC) oil field, Bach Oil Production has established the new Jack Creek field with the completion of the **1 Billy**, located in the SE SE SW of section 34- T1s- R19W. The well was drilled to a total depth of 3675 ft. Bach Oil Production also opened the K-V field in October, 2010.

(9) Finally, the **1 GPW Unit**, spotted in the SW NE SW of section 27- T1s- R19W, is producing 5 barrels of oil and 10 barrels of water from the LKC 'I' and 'K' zones from 3535 to 3584 ft overall. The 3641 ft deep well is located almost one and one-half miles northwest of the Huffstutter field which has produced LKC oil since 1943. The new field has been named Rimfire.

(10) **White Exploration, Inc.**, Wichita (KS), has established a new Cherokee Sand oil field in **Hodgeman** County, just outside and west of the city of Jetmore, Kansas. Discovery was actually made about a year ago when the #1 RJD Unit was completed for an undisclosed potential at location in approximately NW NE NW of section 1- T23s- R24W. Newly released records show that the wildcat well is producing crude from lightly acidized perforations from 4612 to 4616 ft with log top of the Cherokee Sand called at 4612 (-2282 KB). Pickrell Drilling tools bottomed the well at a rotary total depth of 4718 ft. Loggers total depth is 4721. The new oil field is named Jetmore Townsite.

(11) **Palomino Petroleum, Inc.**, Newton (KS), is pumping 94 barrels of oil and 60 barrels of water per day at their 1 GHF new pool discovery well in **Ness** County. The wildcat well is producing crude from Mississippian perforations shot at a depth from 4404 to 4412 ft. Pickrell Drilling Company tools were used to bottom the well at a total depth of 4525 ft. Well site is spotted in the SW SW NW of section 24- T19s- R25W, about three-quarters mile north of established Mississippian oil production in the Fritzier East field, or about four miles south of the town of Laird, Kansas. The new field is named Fritzier Northeast.

(12) **Klabzuba Oil & Gas, Inc.**, Denver (CO), has completed its 34-11-3-25 Brooks well in **Norton** County for 40 barrels of oil and 35 barrels of water per day. The new Clayton Northeast pool discovery found oil deposits in the Lansing-Kansas City formations at site located nearly one mile northeast of the Clayton oil field where the LKC zones have given up crude since 1980. Southwind Drilling's rotary rig was used to drill the well to a total depth of 3972 ft in the SW NE SW of section 34- T3s- R25W. Productive pay zones lie between 3524 to 3654 ft overall in depth. Field area is located about two and one-half miles east of Norton, Kansas.

(13) **Mull Drilling Company, Inc.**, Wichita (KS), has discovered new Mississippian oil reserves in **Gray** County, about five miles south of Charleston, Kansas in the western part of the county. New discovery was made at the 1-13 Bleumer, located in the SE SW NW of section 13- T26s- R30W. No completion details have been released, however, Mississippian Saint Louis formation produces in established fields nearly two miles away from a depth between 4950 to 5050 ft. The Bleumer well was drilled to the Arbuckle at a total depth of 6200 ft by Duke Drilling equipment. The new field is named Monger Northwest.

(14) **CMX, Inc.**, Wichita (KS), is pumping 10 barrels of oil per day, no water, to open the Rusk Northwest oil field in **Sumner** County, south central Kansas. The #1 Boxcar is producing crude from acid treated perforations in the Mississippian formation from 3600 to 3630 ft. Well was drilled into Simpson rocks at a rotary total depth of 4090 ft in approximately the NE SE SE of section 6- T32s- R1E, or about two miles east of Wellington, Kansas. The wildcat well lies almost one mile to the northwest of Simpson oil production in the Rusk field and lies almost three miles southwest of nearest Mississippian production in the Pettigrew field.

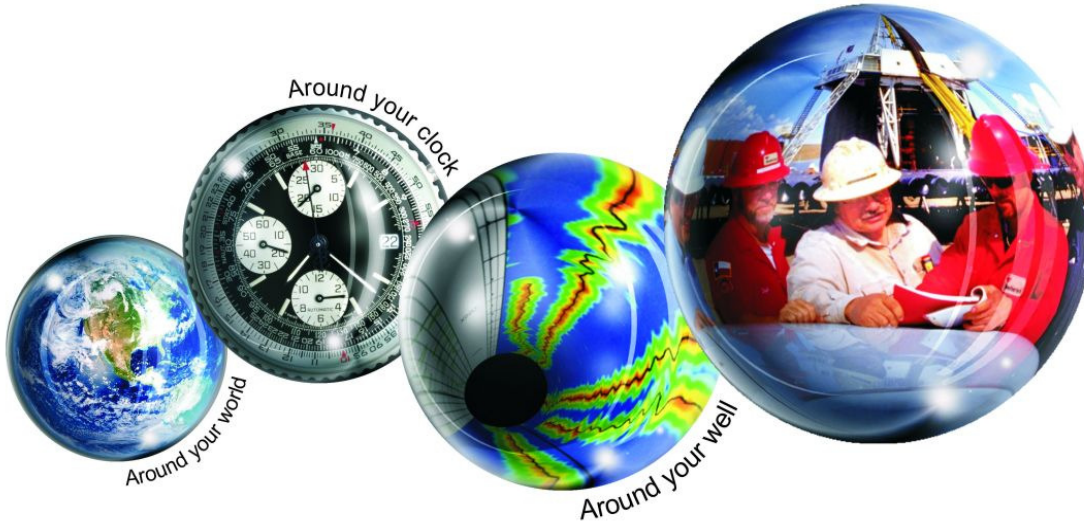
**Save The Date—Friday, January 11, 2013**

**Kansas Geological Society's Annual Banquet**

**This year we will be inducting **Lynn Watney** into Honorary Membership**

# Kansas Geological Foundation Memorials

KGS Member	Date Deceased	Memorial Established	KGS Member	Date Deceased	Memorial Established
Dan Bowles	09/89	1990	Jerold E. Jesperson	06/01	2001
John Brewer	10/89	1990	William A. Sladek	06/01	2001
George Bruce	08/89	1990	Harlan B. Dixon	06/01	2001
Robert Gebhart	01/90	1990	Edward B. Donnelly	08/01	2001
Ray Anderson, Jr.	11/90	1990	Richard P. Nixon	02/02	2002
Harold McNeil	03/91	1991	Robert W. Frensley	12/01	2002
Millard W. Smith	08/91	1991	Gerald W. Zorger	01/02	2002
Clinton Engstrand	09/91	1991	Don L. Calvin	03/02	2002
M.F. "Ted" Bear	10/91	1991	Claud Sheats	02/02	2002
James & Kathryn Gould	11/91	1991	Merle Britting	2002	2002
E. Gail Carpenter	06/91	1993	Harold Trapp	11/02	2002
Benton Brooks	09/92	1992	Donald M. Brown	11/02	2003
Robert C. Armstrong	01/93	1993	Elwyn Nagel	03/03	2003
Nancy Lorenz	02/93	1993	Robert Noll	09/03	2003
Norman R. Stewart	07/93	1993	Benny Singleton	09/03	2003
Robert W. Watchous	12/93	1993	Jay Dirks	2003	2003
J. George Klein	07/94	1994	J. Mark Richardson	02/04	2004
Harold C.J. Terhune	01/95	1995	John "Jack" Barwick	02/01	2004
Carl Todd	01/95	1995	Richard Roby	03/04	2004
Don R. Pate	03/95	1995	Ruth Bell Steinberg	2004	2004
R. James Gear	05/95	1995	Gordon Keen	03/04	2004
Vernon Hess	06/95	1995	Lloyd Tarrant	05/04	2004
E. K. Edmiston	06/95	1995	Robert J. "Rob" Dietterich	08/96	2004
Jack Rine	07/95	1995	Mervyn Mace	12/04	2004
Lee Cornell	08/95	1995	Donald Hoy Smith	04/05	2005
John Graves	10/95	1995	Richard M. Foley	06/05	2005
Wilson Rains	10/95	1995	Wayne Brinegar	06/05	2005
Heber Beardmore, Jr.	09/96	1996	Charles B. Moore	09/96	2005
Elmer "Lucky" Opfer	12/96	1996	Jack Heathman	05/06	2006
Raymond M. Goodin	01/97	1997	Charles Kaiser	09/06	2006
Donald F. Moore	10/92	1997	Rod Sweetman	08/06	2006
Gerald J. Kathol	03/97	1997	Karl Becker	10/06	2006
James D. Davies	08/88	1997	Frank Hamlin	10/06	2006
R. Kenneth Smith	04/97	1997	Marvin Douglas	12/06	2006
Robert L. Dilts	05/97	1997	Robert W. Hammond	04/07	2007
Delmer L. Powers	06/72	1997	Eldon Frazey	04/07	2007
Gene Falkowski	11/97	1997	Pete Amstutz	05/07	2007
Arthur (Bill) Jacques	01/98	1998	Charles Spradlin	05/07	2007
Bus Woods	01/98	1998	Donald R. "Bob" Douglass	09/07	2007
Frank M. Brooks	03/98	1998	Vincent Hiebsch	11/07	2007
Robert F. Walters	04/98	1998	Glen C. Thrasher	03/08	2008
Stephen Powell	04/98	1998	Peg Walters	06/08	2008
Deane Jirrels	05/98	1998	Theodore "Ted" Sandberg	07/08	2008
William G. Iversen	07/98	1998	James Ralstin	11/08	2008
Ann E. Watchous	08/98	1998	Earl Brandt	04/09	2009
W.R. "Bill" Murfin	09/98	1998	Walter DeLozier	05/09	2009
Donald L. Hellar	11/98	1998	Don D. Strong	01/10	2010
Joseph E. Rakaskas	01/99	1999	John Stone	02/10	2010
Charles W. Steincamp	02/99	1999	Craig Caulk	03/10	2010
Robert and Betty Glover	10/96	1998	Joseph E. Moreland, Jr.	03/10	2010
Howard E. Schwerdtfeger	11/98	1999	Gene Garmon	03/10	2010
W. W. "Brick" Wakefield	03/99	1999	James F. Dilts	05/10	2010
V. Richard Hoover	01/00	2000	Jerry Pike	05/10	2010
Warren E. Tomlinson	01/00	2000	Donald Hollar	06/10	2010
James A. Morris	01/00	2000	Delbert Costa	08/10	2010
Eric H. Jager	03/00	2000	John Tanner	08/10	2010
Kenneth W. Johnson	03/00	2000	William (Bill) Owen	09/10	2010
Dean C. Schaake	03/00	2000	Harold (Hal) Brown	10/10	2010
Fred S. Lillibridge	05/00	2000	Edmund G. Lorenz	11/10	2010
Jerry A. Langrehr	07/00	2000	Thomas E. Black	05/11	2011
Clark A. Roach	07/00	2000	Wayne E. Walcher	07/11	2011
Floyd W. "Bud" Mallonee	10/00	2000	Henry F. Filson	07/11	2011
Ralph W. Ruuwe	09/00	2000	Thomas Ray	07/11	2011
Robert L. Slamal	02/01	2001	Edgar E. Smith	09/11	2012



## All Around You

**Weatherford has always been driven by your needs.**

Now, with the addition of Precision Energy Services we're continuing to build a world of skills, services and technologies that revolve – and evolve – around you.

### **The result?**

An expanded global network of 25,000 people, 730 service bases and 87 manufacturing facilities in 100 countries.

This increased local knowledge and service is there to support you anywhere, anytime. From midday in the Middle East to midnight in the middle of nowhere.

And with greatly strengthened capabilities in the critical evaluation skills of directional drilling and wireline logging, we can do even more to improve the profitability and productivity of your wells.

To see how our sphere of services can work for you, visit [www.weatherford.com](http://www.weatherford.com) or contact either your Weatherford or former Precision Energy Services representative.


Drilling | Evaluation | Completion | Production | Intervention

© 2006 Weatherford International Ltd. All rights reserved. Incorporates proprietary and patented Weatherford technology.

**CHANGE SERVICE REQUESTED**

KGS BULLETIN  
 November—December 2012

**November 2012**

Sun	Mon	Tue	Wed	Thu	Fri	Sat
				1	2	3
4	5	6 Tech Talk	7	8	9	10
11	12	13 KGS Board	14	15	16	17
18	19	20 Tech Talk	21	22 Library closed—Thanksgiving	23	24
25	26	27 Tech Talk	28	29	30	

**December 2012**

Sun	Mon	Tue	Wed	Thu	Fri	Sat
						1
2	3	4 Tech Talk	5	6	7	8
9	10	11 KGS Board	12	13	14	15
16	17	18 Tech Talk KGS Bus. Mtg.	19	20	21	22
23	24 Library Closed—Christmas	25	26	27	28	29
30	31 Library Closed—New Years					